

20ft ISO Shipping Container Canteen

Specification

Model:	20ft ISO Shipping Container
Dimensions:	6058*2438*2591mm
Window:	Sliding windows, with curtains
Color:	White
Electrical:	220V/50Hz
MAX.GROSS:	30,480kg (67,200lb)
TARE:	2,200kg (4,850lb)
PAYLOAD:	28,280kg (62,350lb)
CU. CAP.	33.2CU.M. (1.170CU.FT.)
Material:	Exterior wall: Corrugated steel Insulation: 40mm black cotton Interior wall: 40mm XPS Floor: Non-slip aluminium checkered floor
Inclusion:	Wooden table - 180*80cm Benches - 180*40cm Clothes cabinet - 85*42*180cm Water sink, tap, water heater, water tanks Soap dispenser Towel rack Emergency light Bar cabinet Fridge freezer Smoke detector Fire extinguisher bracket Clothes shelve - 120*30cm 2T split AC Exhaust fans Eye wash bottle kit 800W wall-mounted heater - 800*450*85mm 1500W wall-mounted heater - 1500*450*85mm First aid kit Door stop LED lighting bars 63A wall mounted socket 16A socket 13A double socket

Features:	Brand new ISO shipping container, with CSC plate Full steel construction Easy to Assemble 1 steel door and 2 sliding windows Easy-to-clean interior walls & ceilings Separate handwashing station Plenty of storage room Refrigeration space Fire safety equipment and exits in compliance with health and safety regulations Electrically tested Climate controlled Fully insulated
Warranty:	1 year warranty for free

Details



- Front -



- Side -



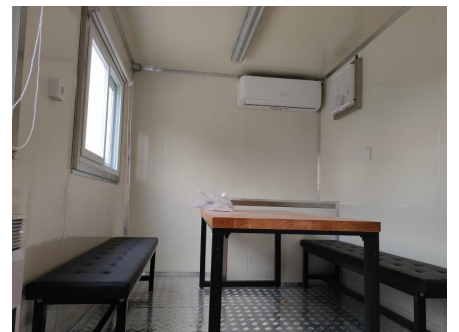
- Side -



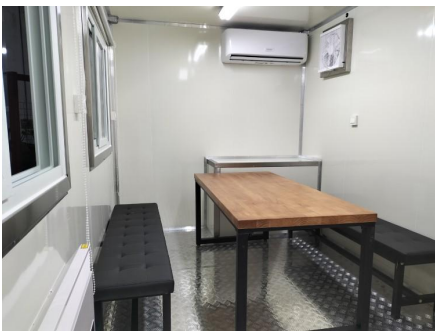
- Side -



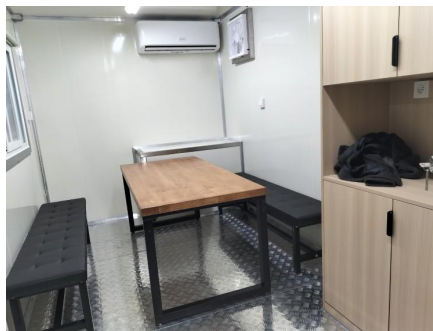
- Ceiling -



- Interior -



- Interior -



-Interior -



- Interior -



- Windows -

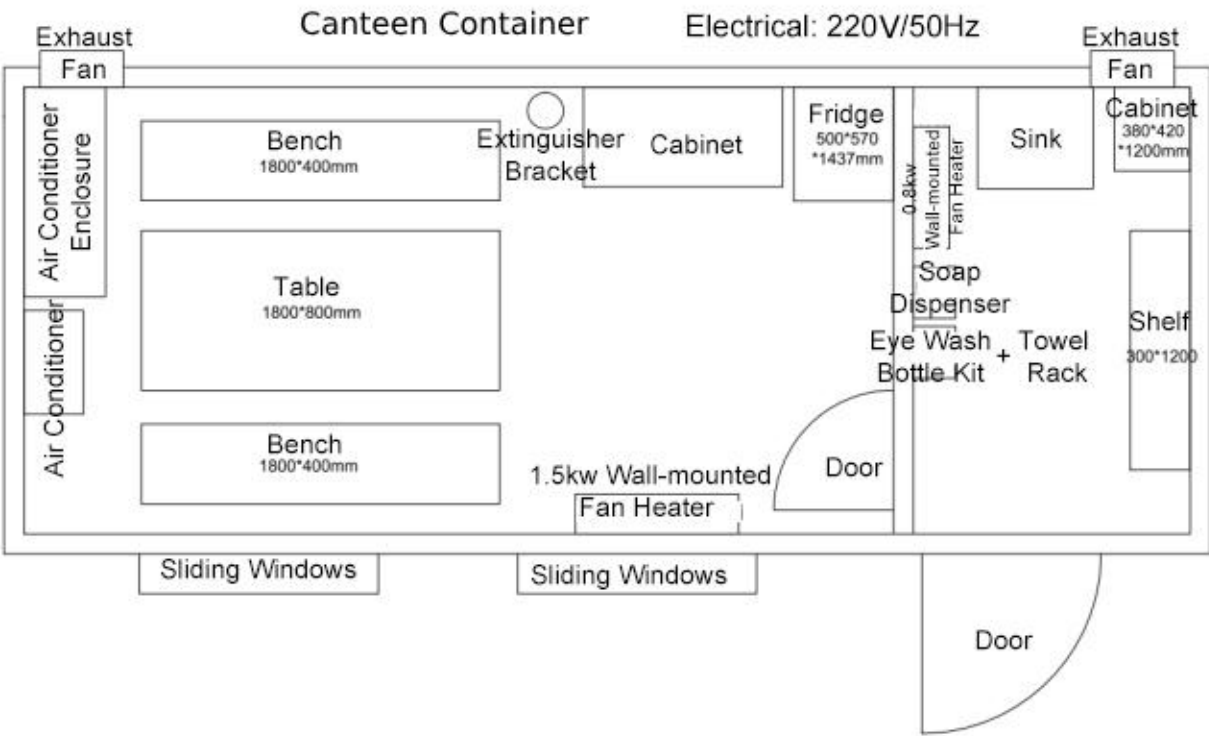


- Heater -



- Emergency Light -

Floor Plan



Design

